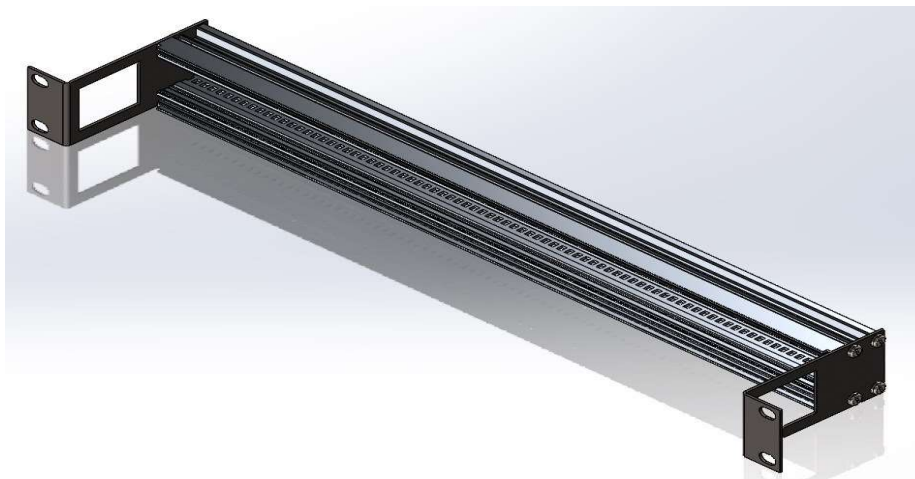


## FastPatch™

### PPFR1A Frame

Our 1U Patch panel frame is a recessed 19" rack mounted patch panel holder, it provides the capability to hold switches, media panels, CWDM devices and more. The panel is recessed by 55mm to allow for a bend radii necessary when routing optical or solid-core cables with cable access holes to either side. We can supply blanking plates where only half widths are required to maintain dust protection and airflow measures.



#### Schematics Drawings

Specifications	
Standard	RoHS Compliant
Height (mm)	44 (1U)
Width (mm)	425 (19")
Depth (mm)	90

Ordering information	
Website Location	Product Code
SI-PP-PPFR1A	UP-PPFR1A